

# TWINSTAR 3Z24



 MADE IN ITALY 

PLACING BOOM:  
**OPENING SYSTEM "Z"**

PUMPING UNIT:  
**UP TO 73 m<sup>3</sup>/h**

TOTAL WEIGHT:  
**< 19 t (41887 lb) on vehicle 3 axles**  
**< 20 t (44092 lb) on vehicle 4 axles**

ASSEMBLY ON VEHICLE 3 AXLES:  
**WB 3,500 mm**  
**(11'4")**

ASSEMBLY ON VEHICLE 4 AXLES:  
**WB 4,200 - 4,500 mm**  
**(13'7" - 14'7")**

## TECHNICAL CHARACTERISTICS

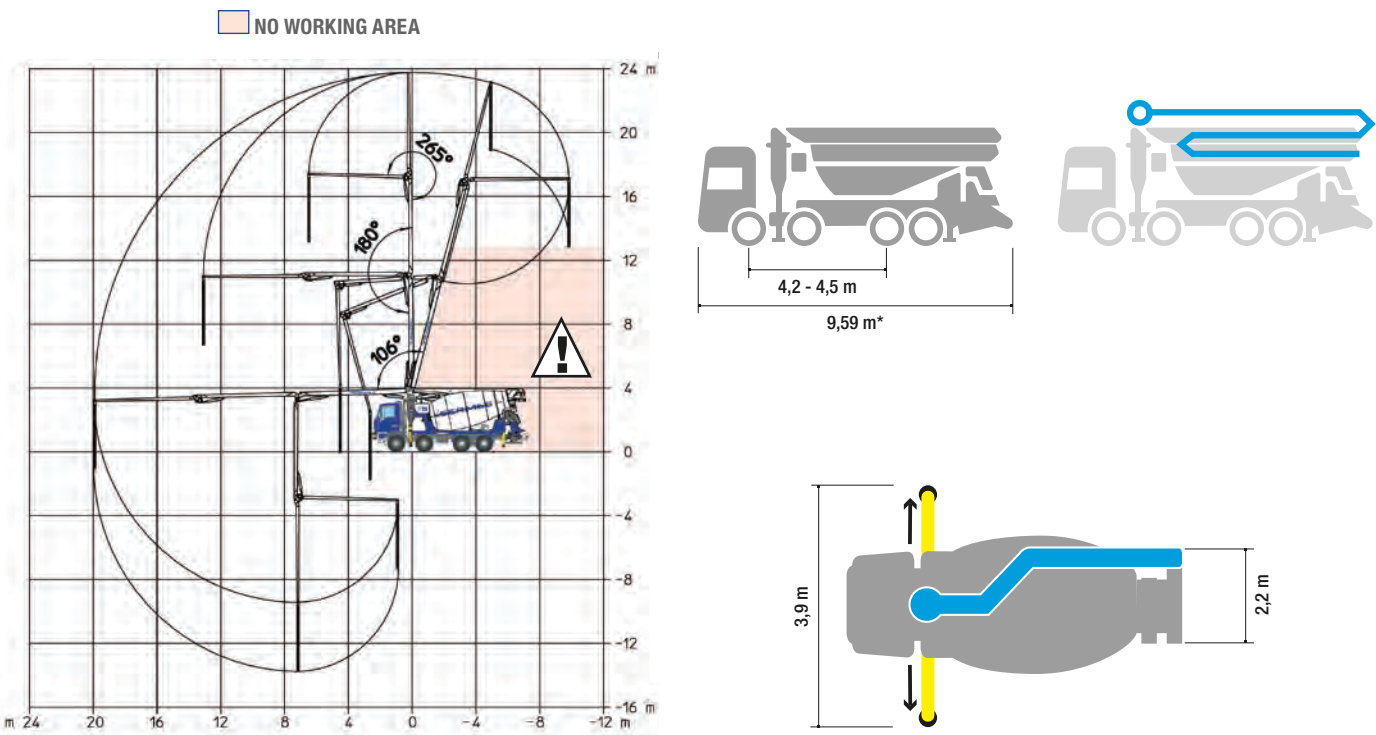


- Mixer pump produced, assembled and tested by SERMAC
- Structural integrity verified with the Finite Element Method (FEM)
- Pump frame designed for high torsion rigidity
- Suitable for assembly on 3- or 4-axle trucks
- Boom 3-stage, Z-folding type
- Pipeline diameter Ø 100 mm (4")
- Main components sourced from genuine German and Italian manufacturers
- Pumping unit with open hydraulic system and high manganese cast iron S-valve
- Drum with high load capacity, made with 4 bands to reduce the wears, with elliptical bottom in steel and cone to reinforce the attack flange reducer
- Ideal for working in tight spaces





TWINSTAR  
3724



\*Dimensions variable according to the truck assembly

DISTRIBUTION BOOMS

MAX. VERTICAL REACH	24 m (78'8")
MAX. HORIZONTAL REACH	20 m (65'7")
MAX. DOWNWARD REACH	-13,7 m (44'11")
NUMBER OF BOOM SECTIONS	3
MIN. UNFOLDING HEIGHT	6,9 m (22'7")
BOOM ROTATION	370°
BOOM SECTION ARTICULATION	106° - 180° - 265°
BOOM UNFOLDING SYSTEM	Z
FRONT OUTRIGGERS	Horizontal Telescopic
REAR OUTRIGGERS	Fixed
FRONT OUTRIGGER SPAN	3,9 m (12'9")
REAR OUTRIGGER SPAN	2,2 m (7'2")

STANDARD EQUIPMENT

- Horizontal telescopic front and rear outriggers type
- Straight pipes made in single-wall steel. Bends made in casting
- Two sets of radio remote controls provided with 2-speed proportional boom control, automatic free frequency search, 8-position joysticks and concrete output control
- Wear compensation system between wear plate and wear ring. Wear plate and wear ring with tungsten carbide inserts
- Automatic hopper greasing unit with manual back-up system
- Automatic oil lubrication for piston rams
- Safety device on hopper door and hopper grate
- Electric vibrator on hopper grate
- Multi-stage water pump (130 l/min - 40 bar)
- Work light on hopper
- Metal bin for accessories beside hopper
- Warning horn on the boom
- Accessories for cleaning and maintenance

PUMPING UNIT

	S6	
	BS6C07-73-54	BS6C07-73-70
THEORICAL OUTPUT (MAX)* ROD SIDE	73 m³/h - 95 yd³/h	73 m³/h - 95 yd³/h
PRESSURE ON CONCRETE (MAX)* ROD SIDE	54 bar - 783 psi	70 bar - 1015 psi
NUMBERS OF CYCLES PER MINUTES	48 '/min	48 '/min
PISTONS DIAMETER	180 mm	180 mm
CONCRETE CYLINDERS	1000 mm	1000 mm
S-VALVE DIMENSION	6"	6"
CONCRETE HOPPER CAPACITY	450 l	450 l

\*Cannot be reached simultaneously

MIXER

NOMINAL CAPACITY	8,5 m³
GEOMETRICAL DRUM VOLUME	12 m³
NUMBER OF RPM	0 - 16
ROLLING ROOLS	2
WATER TANK CAPACITY	800 l
OIL TANK CAPACITY	300 l



ACCESSORIES ON REQUEST

- Straight pipes made in twin-wall with highly abrasion resistant induction hardened inner liner. Elbows made in twin-wall with chromium carbide inner liner
- Air compressor for pipeline cleaning (450 l/min)
- Additional work light on hopper
- Stop flow on end hose
- Kit pipeline pumping on ground
- Air charged sprayer for concrete release agent (25 l - 8 bar)
- Pressure washer with fan-shaped nozzle (17 l/min - 130 bar)
- Ecologic plug
- Overturning chute
- Additional outlet chute
- Sermac Control Stability (SCS)



## TRUCK MOUNTED PUMPS

12 different pump models with modern front X-type outriggers and provided with booms with different fold configurations from 20m to 65m vertical reach.



## MIXER PUMPS

4 models with Z-fold distribution booms from 21m to 33m vertical reach.



## TRAILER PUMPS

7 different models in the combined 6" and 8" Series available in high- and low pressure models.



## STATIONARY BOOMS

2 stationary boom models with 28m and 33m reach.



### SERMAC Srl

Sede centrale: Via A. Manzoni, 146 - 20811 Cesano Maderno, (MB) Italy  
Tel. +39 0362 364 320 - Fax +39 0362 163 2000  
info@sermacpumps.com



[www.sermacpumps.com](http://www.sermacpumps.com)